

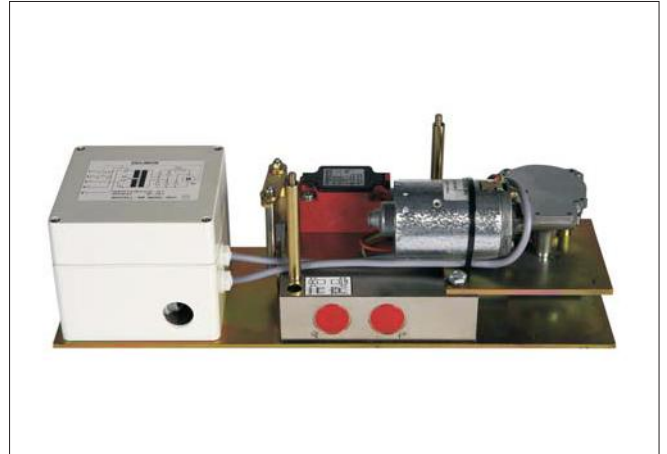
**Product description**  
**Change-over**  
**valve SA-V**

**APPLICATION**

For hydraulic systems, particularly dual-line centralized systems.  
For use SA-V as 3/2-way valve close outlet B.

**PRODUCT CHARACTERISTICS**

- Function 4/2-way
- Drive by direct-current geared motor
- Working pressure max. 400 bar



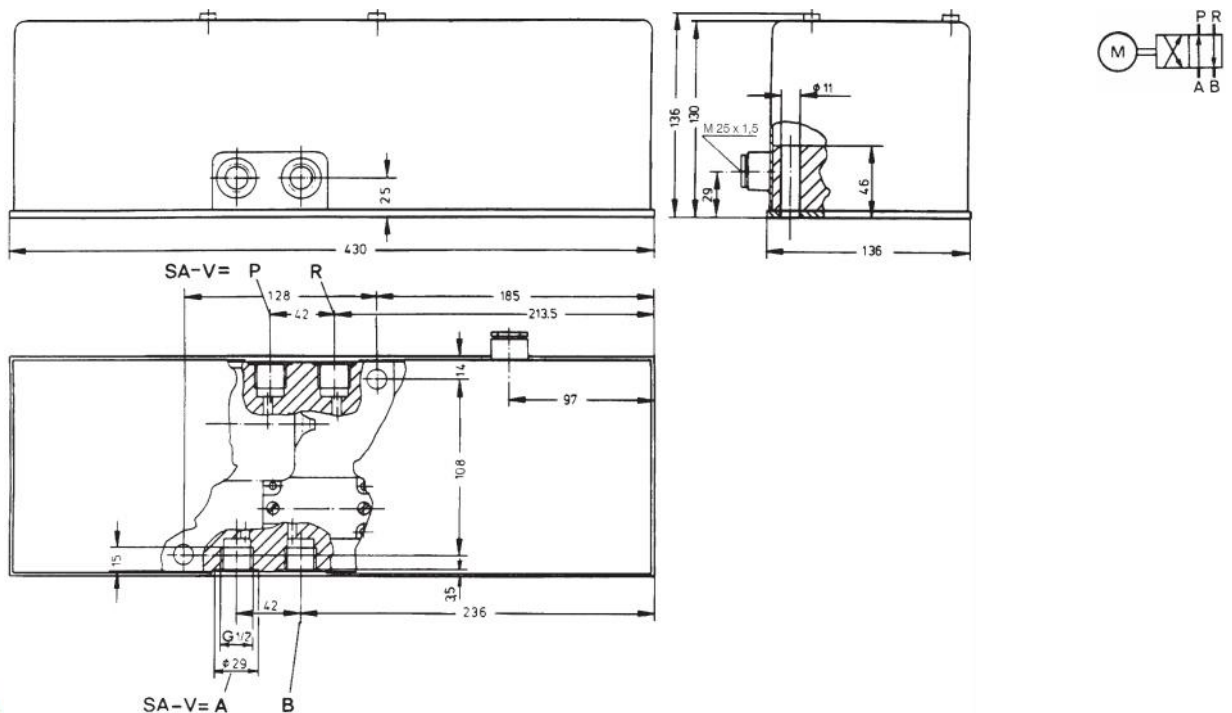
**DESIGN**

Operation by means of a geared D.C. motor with high torque ensuring reliable action even under unfavorable operating conditions (e.g. low temperatures or tough lubricant).

Because of the short action times, the plunger passes through critical valve settings with little overlap, at high speed, thereby avoiding premature wear.

Each of the plunger end positions is electrically monitoring by a limit switch.

The motor's overrun and direction of rotation have no effect on the limit switch setting of the precision of the change-over. A transformer, rectifier and automatic cut-out are incorporated, for connection to a AC 110-127V or 200-240V supply.



<b>A. VALVE TYPE</b>	<b>Code</b>
----------------------	-------------

SAV

<b>B. OPERATING VOLTAGE</b>	<b>Code</b>
-----------------------------	-------------

110 - 127 and 200 - 240 V AC / 50/60Hz  
24 V DC

11  
24

<b>C. REVISION</b>	<b>Code</b>
--------------------	-------------

Status A

A

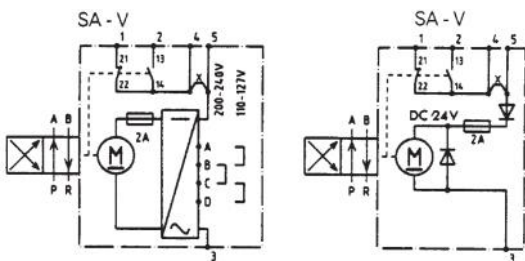
<b>D. ACCESSORIES</b>	<b>Code</b>
-----------------------	-------------

without

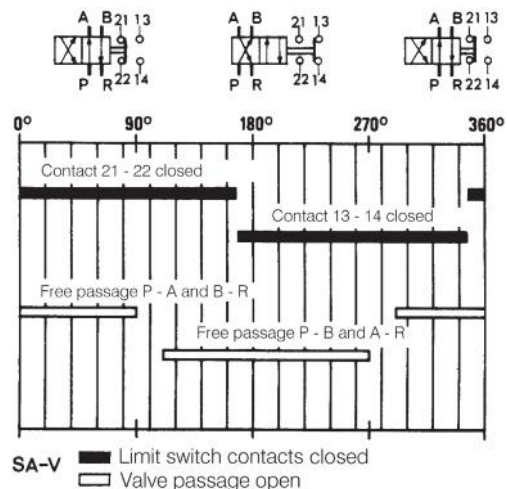
00

<b>SPECIFICATION</b>
----------------------

Working pressure max.: \_\_\_\_\_ 400 bar  
 Temperature range : \_\_\_\_\_ - 20° C up to + 80° C  
 Action time : \_\_\_\_\_ approx. 0.5 s  
 Angle of rotation : \_\_\_\_\_ 180°  
 Tightening torque : \_\_\_\_\_ 18 Nm  
 Torque : \_\_\_\_\_ 4 Nm  
 Operating voltage : \_\_\_\_\_ 110 - 127 and 200 - 240 V AC; 24 V DC  
 Cable gland . \_\_\_\_\_ M 25 x 1.5  
 Power consumption max.: \_\_\_\_\_ 42 W  
 Protection system : \_\_\_\_\_ IP 65  
 Installation position : \_\_\_\_\_ optional  
 Weight : \_\_\_\_\_ 13 kg  
 Connection diagram:



Circuit diagram



Change in valve setting and switch position



**EXAMPLE OF ORDER**

Code					
S	A	V	2	4	A

<b>Valve type SA-V</b>	Code: SAV
<b>Operating voltage</b> 24 V DC	Code: 24
<b>Revision</b> Status A	Code: A
<b>Accessories</b> without	Code: 00

