

**Product description**  
**Switching**  
**device SG-A**

**APPLICATION**

The switching device SG-A is used as differential pressure switch in dual-line centralized lubrication system. When the differential pressure is 50 bar and/or 100 bar, it releases a pulse for the reversion of the directional control valve or for the monitoring of the system.

**PRODUCT CHARACTERISTICS**

- Switching pressure difference 50 or 100 bar
- Working pressure 400 bar

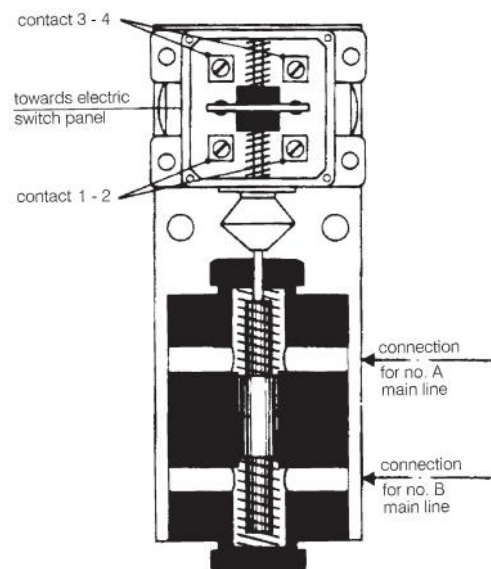


**DESIGN**

The switching device SG-A with ram, enclosed consists of a housing with a metallic sealing piston, which is held in its mid-position by means of two compression springs. Furthermore, it consists of a limit switch, which is fixed in its position by means of a safety plate, on which these parts are fixed.

**FUNCTION**

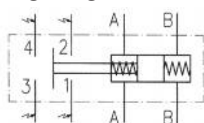
With lubricating cycle 1, lubricant is supplied to main line A. Main line B is relieved. Due to the pressure build-up in main line A, the piston is displaced downwards against the springiness of the lower compression spring. When the differential pressure between the two main lines is approx. 50 bar and/or 100 bar, the contacts 1 and 2 are closed via the piston at the limit switch. Due to this pulse, the 4/2-way valve is reversed via the electric control of the system. The reversion of the 4/2-way valve causes lubricating cycle no. 2 to start, and lubricant is supplied to main line B while main line A is relieved. Due to the pressure build-up in main line B, the piston is displaced upwards against the springiness of the upper compression spring. When the pressure difference between the two main lines is approx. 50 bar and/or 100 bar, the contacts 3 and 4 are closed via the piston at the limit switch, and a new reversion process is initiated.



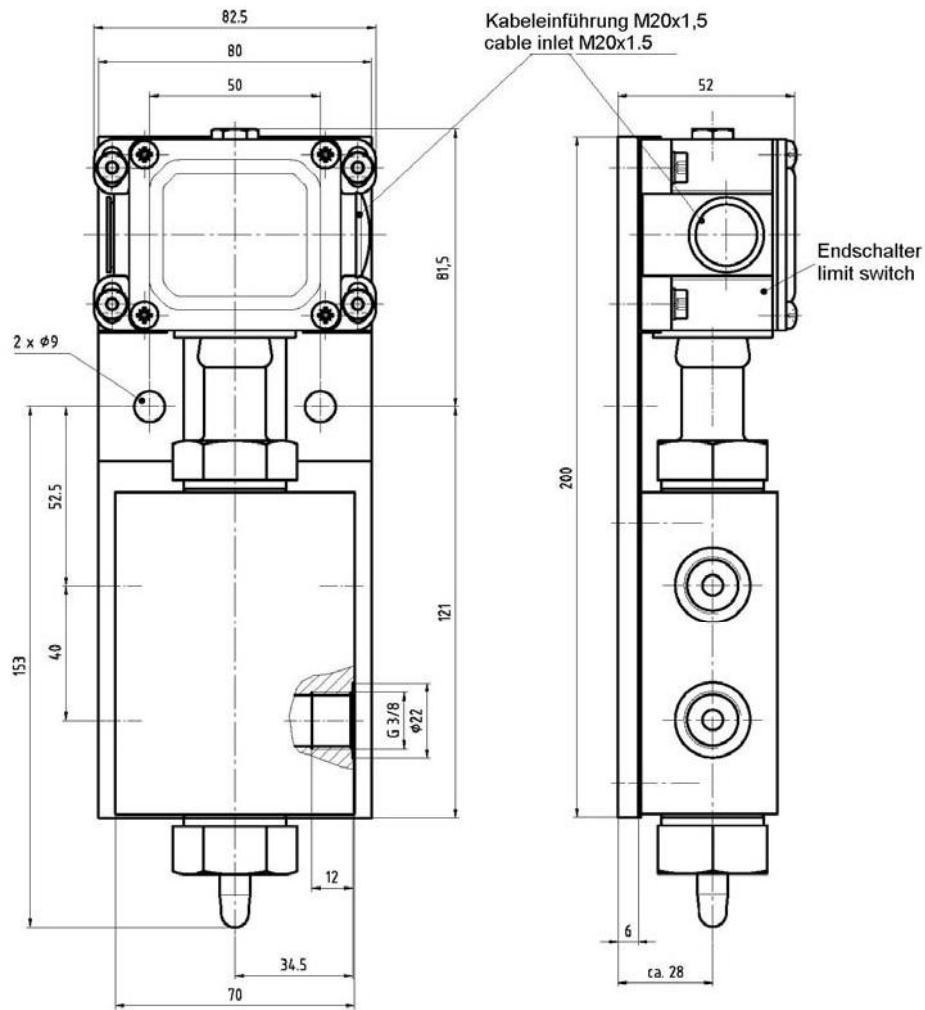
A. TYPE OF APPLIANCE	Code
	SGA
B. SWITCHING PRESSURE DIFFERENCE	Code
50 bar	05
100 bar	10
C. REVISION	Code
Status A	A
D. ACCESSORIES	Code
without	00

### SPECIFICATION

Switching pressure difference : \_\_\_\_\_ 50 or 100 bar  
 Working pressure : \_\_\_\_\_ max. 400 bar  
 Output volume : \_\_\_\_\_ 0.7 cm<sup>3</sup>  
 Rated voltage : \_\_\_\_\_ max. AC 240 V  
 Contact rating : \_\_\_\_\_ min. 10 mA at DC 24 V  
 Contact rating : \_\_\_\_\_ max. 3 A  
 Power rating at 500 V : . \_\_\_\_\_ max. 7500 VA  
 Protection system : \_\_\_\_\_ IP 65  
 Suitable lubricants on mineral oil basis:  
   Lubricant greases \_\_\_\_\_ NLGI class 000 up to 3 DIN 51818 (51825)  
   Oils \_\_\_\_\_ with a viscosity from 190 mm<sup>2</sup>/s at operating temperature  
   Synthetic lubricants \_\_\_\_\_ on request  
 Ambient temperature : \_\_\_\_\_ between - 20°C and + 80°C  
 Installation position : \_\_\_\_\_ optional  
 Weight : \_\_\_\_\_ 3 kg  
 Switching diagram:



**SPECIFICATION** (Continuation)



**EXAMPLE OF ORDER**

Code							
S	G	A	0	5	A	0	0

<b>Type of appliance SG-A</b>	Code: SGA
<b>Switching pressure difference</b> 50 bar	Code: 05
<b>Revision</b> Status A	Code: A
<b>Accessories</b> without	Code: 00

